

GLOBAL SWITCH **ALWAYS ON**

THE RESILIENCE AND RELIABILITY OF OUR DATA CENTRE SERVICE CAN BE CHARACTERISED SIMPLY AS 'ALWAYS ON'. THE ABILITY TO PROVIDE UNINTERRUPTED POWER AND OPTIMISED COOLING ARE WHAT COUNT IN THE DATA CENTRE BUSINESS. OUR PERFORMANCE IN THESE KEY AREAS, SUPPORTED BY EXPERT TECHNICAL AND CUSTOMER TEAMS, DELIVERS A BEST-IN-CLASS SERVICE TO OUR CUSTOMERS.

GLOBAL SWITCH, ALWAYS ON.

“WE ARE THE LEADING, LARGE-SCALE, DATA CENTRE PROVIDER IN EUROPE AND ASIA-PACIFIC, PROVIDING THE RELIABILITY, SECURITY AND FLEXIBILITY THAT OUR CUSTOMERS REQUIRE TO HOUSE THEIR I.T. INFRASTRUCTURE. RESPONDING TO OUR CUSTOMERS’ NEEDS, WE ARE EXPANDING THE CAPACITY AND REACH OF OUR DATA CENTRES”.

“AT GLOBAL SWITCH, WE ALWAYS DELIVER”.

JOHN CORCORAN, CHIEF EXECUTIVE OFFICER



Global Switch data centres are located in key international business and connectivity hubs. Because of this we are able to provide Private Suites, Cages, Racks, and Meet Me Rooms to a broad range of customers, global

and national, large and small. Our customers include government organisations, financial institutions, enterprises, global system integrators, telecommunication carriers, managed service providers and other hosting businesses.



AS WE OWN THE  
MAJORITY OF OUR  
DATA CENTRES, WE  
HAVE COMPLETE  
FLEXIBILITY TO  
ADAPT THEM TO  
OUR CUSTOMERS'  
CHANGING NEEDS.

GLOBAL SWITCH,  
ALWAYS FLEXIBLE.

Our rigorous approach to applying and maintaining best standard practices throughout all our data centres delivers the highest quality service and state-of-the-art facilities to our customers.

Established in 1998, Global Switch has built a reputation for creating data centres that set new standards in scale, resilience and connectivity. We are financially strong and committed to maintaining our industry leading position. This provides our customers with complete peace of mind around their mission-critical IT systems.

ALWAYS ON [GLOBSWITCH.COM](https://www.globalswitch.com)



GLOBAL  
SWITCH

DELIVERING THE RIGHT SOLUTION FOR OUR CUSTOMERS IS CENTRAL TO THE GLOBAL SWITCH SERVICE. WHETHER IT'S A SINGLE RACK OR A CUSTOM-DESIGNED PRIVATE SUITE FOR OUTSOURCED I.T. OR BUSINESS CONTINUITY PURPOSES, WE'LL CREATE AND FIT OUT THE RIGHT SPACE FOR YOU.

**GLOBAL SWITCH, ALWAYS RESPONDING.**



Offering the largest European and Asia-Pacific footprint, our customers are able to benefit from superior power, cooling, security, and sophisticated monitoring of infrastructure - not always available in their own buildings. Our services include:

**Private Suites**  
A rapidly growing number of businesses are now enjoying the benefits of outsourcing IT infrastructure and mission critical systems into Global Switch Private Suites. These self contained areas, which can include 24x7 network operating

centre facilities, are designed and built to customers' bespoke specifications.

**Cages**  
Global Switch Cages offer the benefits of large scale resilience for medium sized IT space requirements. This solution provides secure private areas for customers and offers flexibility in design and layout.

**Racks**  
Global Switch Racks remain a vital resource for customers who need to maintain business-critical IT capabilities in

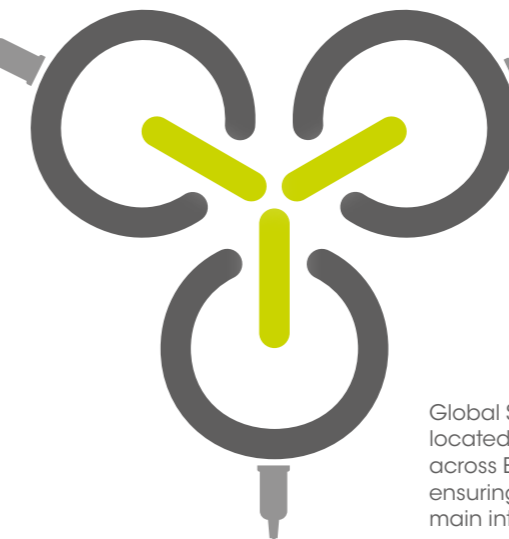
a third-party location. They also give customers the room to grow their IT systems with ease. Racks provide a highly flexible and cost-effective option for housing network and IT equipment.

**Meet Me Rooms**  
Our Carrier Neutral status ensures that carriers and ISPs are able to establish Points of Presence throughout our portfolio of data centres. Our diversely routed Meet Me Rooms ensure that customers can connect directly to all major carriers and telecommunication service providers.



GLOBAL SWITCH ENSURES THAT CUSTOMERS ARE ABLE TO CONNECT DIRECTLY TO MAJOR CARRIER AND ISP NETWORKS. OUR CARRIER NEUTRAL STANCE GIVES YOU THE FLEXIBILITY TO SOURCE COST EFFECTIVE AND HIGH PERFORMANCE NETWORKS TO SUIT YOUR GEOGRAPHICAL REQUIREMENTS.

GLOBAL SWITCH, ALWAYS CONNECTED.



Global Switch data centres are located in key connectivity hubs across Europe and Asia-Pacific ensuring close proximity to the main international fibre routes.

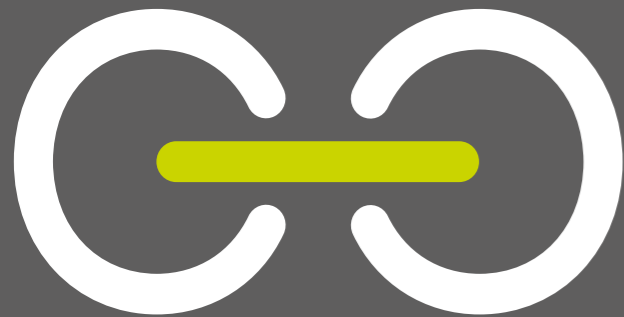
Access to multiple ISPs, Carriers and other telecommunication companies is essential to

ensuring business continuity and increasing network reach.

At Global Switch you are able to establish direct connections to a vast portfolio of service providers giving you the flexibility to diversify your service providers as your business needs evolve.

AT GLOBAL SWITCH NOT ONLY DO WE HAVE ROBUST AND RESILIENT INFRASTRUCTURE WE ALSO HAVE STATE-OF-THE-ART MONITORING SYSTEMS GIVING CUSTOMERS COMPLETE CONFIDENCE.

GLOBAL SWITCH,  
ALWAYS WATCHFUL.



All Global Switch data centres operate to a Tier III standard or higher. We continually invest in our infrastructure across all centres to ensure that we are running the most efficient and up-to-date systems for our customers.

Monitoring the environment and performance of our data centres is a key aspect of the services we provide.

Our entire critical infrastructure is managed and monitored

using highly sophisticated Building Management Systems which enable our on-site facilities management team to scrutinize all key components - from power and cooling to security and access.

These processes are there to identify any discrepancies in the power, cooling and environment, or security performance of our data centres. This monitoring is backed up by 24x7 security and technical support teams.





WHILE OUR DATA CENTRES NEED TO BE ABSOLUTELY SECURE, OUR CUSTOMERS NEED TO BE ABLE TO ACCESS THEIR TECHNICAL SPACE SWIFTLY AND EASILY WITHOUT COMPROMISING SECURITY.

GLOBAL SWITCH, ALWAYS SECURE.

Security is of paramount importance at all our data centres. The most rigorous of controls and systems are integrated with customers' access needs so that security is balanced with operational efficiency.

- 24x7x365 manned security presence
- Secure and monitored access into data centres through man-trap entrances
- Robust access procedures with mandatory proof of identity
- Electronic access to customer areas including proximity card readers
- Constant closed circuit TV video camera surveillance internally and externally
- Sophisticated intruder systems and alarms
- Advance warning communications in place through government and cyber organisations
- Experienced high level security teams
- Bespoke layers of additional security tailored to customer requirements.





AT GLOBAL SWITCH WE ARE COMMITTED TO REDUCING THE IMPACT OF OUR DATA CENTRES ON THE ENVIRONMENT THROUGH USING ENERGY EFFICIENTLY, REDUCING OUR CARBON EMISSIONS AND PROVIDING GREEN ENERGY SOLUTIONS.

GLOBAL SWITCH, ALWAYS GREEN.



Data centres are responsible for over 1% of global electricity consumption which is increasing year on year. By 2020, carbon emissions from data centres are predicted to exceed those of the airline industry.

Through innovation in design and operation, and working closely with our customers, we continually enhance the energy

efficiency of our data centres. This results in constantly improving the effectiveness of our power usage across all our data centres.

Sustainable Green Energy is procured for Global Switch's own usage, and offered as an option to customers, where available. This type of energy is generated from renewable energy sources such as wind-farms.





IN THIS CHALLENGING AND DYNAMIC MARKET, WE RECOGNISE THE IMPORTANCE OF CUSTOMER SERVICE. OUR PEOPLE DELIVER A HIGH QUALITY PERFORMANCE AND HIGH QUALITY SERVICE.

GLOBAL SWITCH, ALWAYS PERSONAL.

The depth of experience and commitment of our personnel maintain Global Switch's market-leading position. Our technical, customer service and support teams share the company's vast experience across international locations.

The bank of knowledge and skills of our personnel puts us at the cutting edge of data centre technology and service development.



THE SERVICE PROVIDED BY GLOBAL SWITCH IS UNDERPINNED BY A METICULOUS APPROACH TO THE DAY-TO-DAY MANAGEMENT OF OUR DATA CENTRES.

GLOBAL SWITCH, ALWAYS VIGILANT.



To enable customers to operate efficiently within our centres, we have robust processes for managing key services such as access, cross connects, deliveries, cleaning and essential works.

Each of these operational services have been subject to rigorous benchmarking and quality testing so that our customers can be confident that their IT environment will not be compromised by any aspect of the data centre's environment or operation.

#### OUR OPERATIONAL SERVICES INCLUDE

##### Access

Providing swift and easy access to our data centres without comprising the security, infrastructure or safety procedures is at the core of our service. We offer different types of access, together with comprehensive site inductions to ensure our customers have peace of mind for the safety and security of all personnel and equipment in our centres.

##### Cross Connects

Having resilient connectivity solutions and interconnects at our data centres are crucial to our customers' business continuity. Our service includes the management of all cable

installations within any Global Switch centre. We ensure that these are carried out in accordance with ISO standards.

##### Deliveries

As part of our commitment to maintaining the highest levels of security in all our data centres, our Deliveries, Receipt and Retrieval service ensures that all deliveries are tracked, stored securely and passed to customers as swiftly as possible. Not only does it guarantee the security and operational integrity of our centres, but also customers have the freedom to arrange deliveries at any time.

##### Technical cleaning

Technical cleaning is one of the key components of the smooth running of data centres.

Our service includes access to specialist suppliers – all of whom work in accordance with the required ISO standard, as well as environmental audits of technical space.

Customers benefit from the highest standard of cleanliness and also from competitively priced services due to our purchasing power.

##### Day to day works

We offer a range of services around the day to day works in technical space. Customers have the choice of either using our highly skilled personnel and approved contractors, or our supervisory service with permits to work, where customers wish to undertake the works themselves.

# WORLD CLASS DATA CENTRES IN PRIME LOCATIONS FOR CONNECTIVITY AND EASE OF ACCESS BY CUSTOMERS. KEY BENEFITS INCLUDE:

- ⚡ Unrivalled power with multiple layers of redundancy
- ⚡ Flexible power densities
- ⚡ Carrier and cloud neutral where businesses can connect seamlessly with telcos, ISPs, cloud providers and peers
- ⚡ Highly secure environment with robust processes in place to protect customers' infrastructure
- ⚡ Shared and private environment infrastructure solutions
- ⚡ Strong operational track record
- ⚡ Continuous improvement and excellence
- ⚡ Strong customer service ethos
- ⚡ A financially secure owner and operator of its own data centres.

Global Switch – the leading large-scale, carrier and cloud neutral data centre operator providing fully fitted space in prime locations in Europe and Asia-Pacific.



This brochure has been printed on Vision Superior which has FSC certification, is bleached using an Elementary Chlorine Free process and is produced at a mill in the UK that is certified to the ISO 14001 environmental management standard. The inks used in the printing process are vegetable based and totally recyclable. Printed in the UK by an FSC, ISO and Carbon Neutral printing company. © Global Switch 2021.



**B**



**J**



**A**



**G**



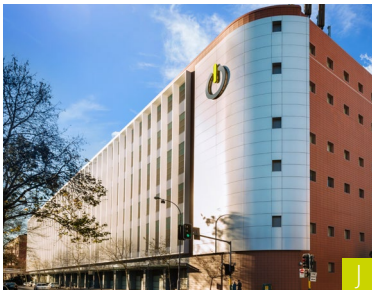
**C**



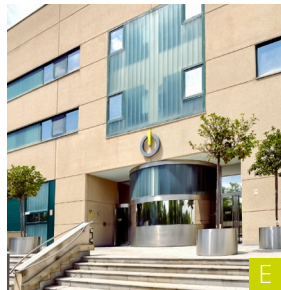
**F**



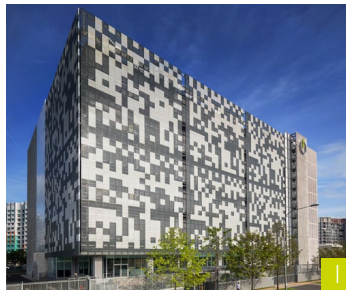
**D**



**J**



**E**



**I**



**H**

## Corporate Office

2nd Floor, Nova North  
11 Bressenden Place  
London, SW1E 5BY  
United Kingdom  
+44 20 8054 9000  
info@globalswitch.com

## Data Centres

### **A** Amsterdam Campus

**Amsterdam West / Amsterdam East**  
Johan Huizingalaan 759  
1066 VH Amsterdam  
Netherlands  
+31 20 6666 300  
salesamsterdam@globalswitch.com

### **London Campus**

**B London East**  
Global Switch House  
3 Nutmeg Lane  
London E14 2AX  
United Kingdom  
+44 20 7473 9000  
saleslondon@globalswitch.com

### **C London North**

East India Dock House  
240 East India Dock Road  
London E14 9YY  
United Kingdom  
+44 20 7473 9000  
saleslondon@globalswitch.com

### **D** Frankfurt Campus

**Frankfurt South / Frankfurt North**  
Eschborner Landstraße 110  
60489 Frankfurt am Main  
Germany  
+49 69 74 22 70  
salesfrankfurt@globalswitch.com

### **E** Madrid

Calle Yécora, 4  
28022 Madrid  
Spain  
+34 91 312 06 00  
salesmadrid@globalswitch.com

### **F** Paris Campus

**Paris East / Paris West**  
7-9 rue Petit  
92582 Clichy Cedex, France  
+33 1 55 90 04 60  
salesparis@globalswitch.com

### **G** Hong Kong

18 Chun Yat Street  
Tseung Kwan O Industrial Estate  
New Territories  
Hong Kong  
+852 3955 1000  
saleshongkong@globalswitch.com

## Singapore

### **H** Singapore Tai Seng

2 Tai Seng Avenue  
Singapore 534408

### **I** Singapore Woodlands

Woodlands Avenue 12  
Singapore 738990  
+65 6958 1800  
salessingapore@globalswitch.com

### **J** Sydney Campus\*

**Sydney East / Sydney West**  
400 Harris Street  
Ultimo, Sydney  
NSW 2007 Australia  
+61 2 9566 7000  
salessydney@globalswitch.com

\*Consolidated Group entity

GLOBAL  
SWITCH